

Interface Portions and In-line Portions of the Various Units and Devices

GT15 Series

— HID Lamp DII Sockets —

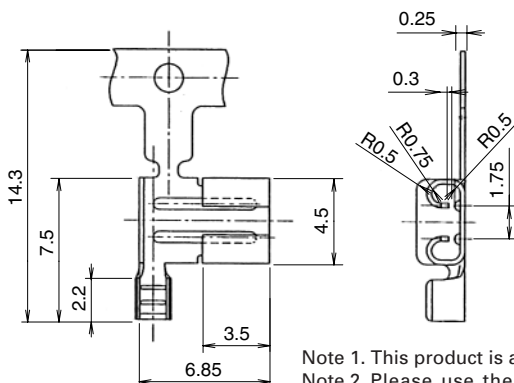
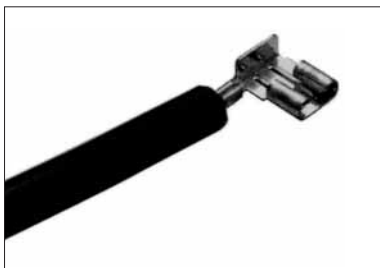


■ Features

- Engages with P32d type lamp base conforming to the IEC61-1 standard.
- Crimping is used as the wiring method with the cable to make assembly very easy.
- A bulb check function is available with some types (e.g., GT15A and B).
- GT15B permits shielded mounting.

HID Lamp Sockets

● Terminals

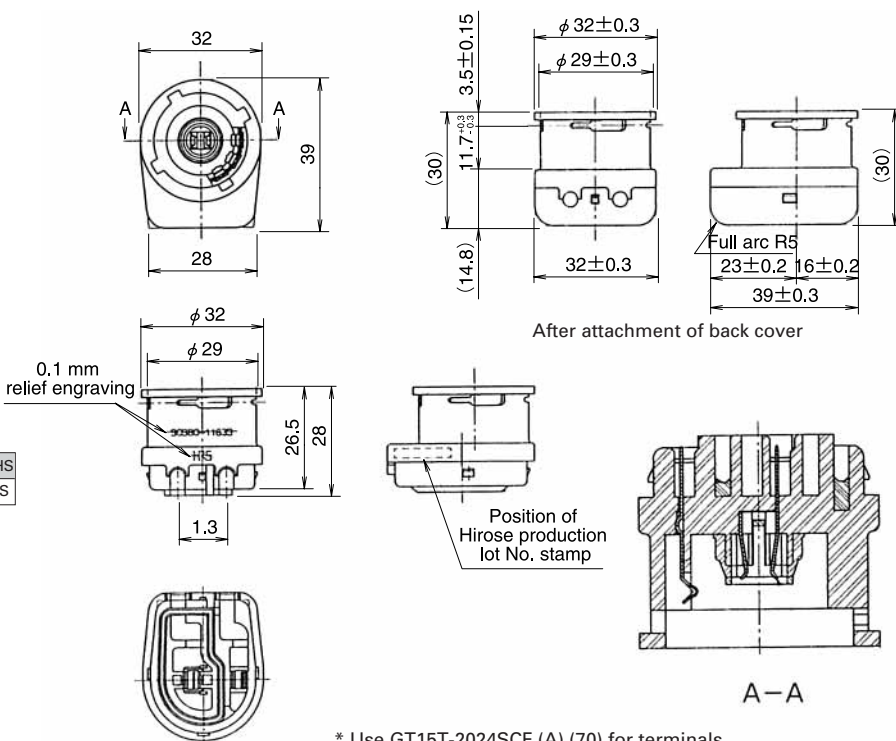


Note 1. This product is a terminal for the GT15T-2S.
Note 2. Please use the following tools for the crimping of this product:

Applicator AP105-GT15T-2024S
Hand tool HT105/GT15T-20S

Part Number	CL No.	Packaging	RoHS
GT15T-2024SCF (A)(70)	765-0008-5-70	5,000 pcs. per reel	YES

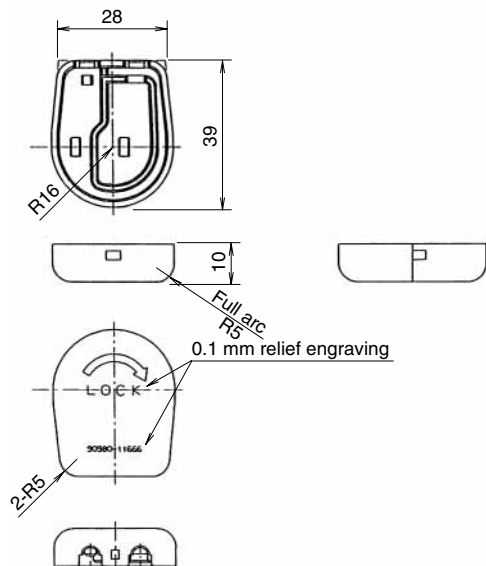
● Body



* Use GT15T-2024SCF (A) (70) for terminals.

Part Number	CL No.	RoHS
GT15T-2S	765-0006-0	YES

● Cover



Part Number	CL No.	RoHS
GT15T-2S-F	765-0007-2	YES

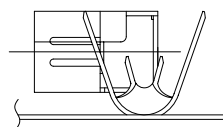
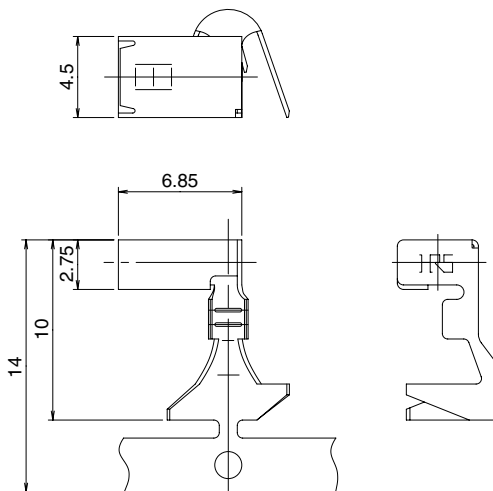
GT15 Series

- GT 5
- GT 13
- GT 16
- PO5G
- GT 11
- GT 14
- GT 17
- GT 19
- GT 3
- GT 6W
- GT 7
- GT 10
- GT 18W
- GT 15
- GT 8
- GT 9
- GT 25

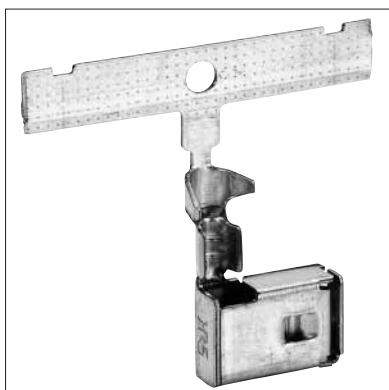
● Terminals



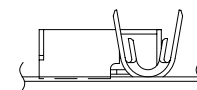
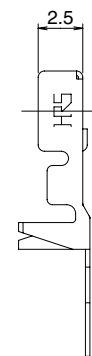
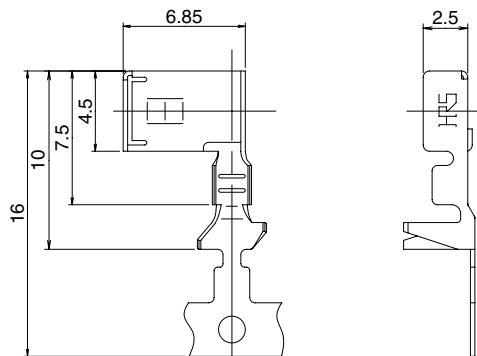
* For high-voltage cables



Part Number	CL No.	Conductor Size (AWG)	Outer Diameter	Packaging	RoHS
GT15B-2024SCF(70)	765-0022-6-70	#20 to 24	3.6 to 4.0 mm	2,000pcs, per reel	YES

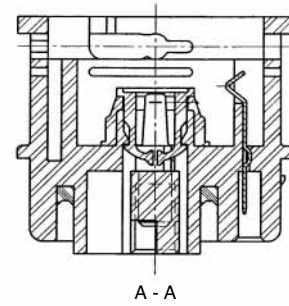
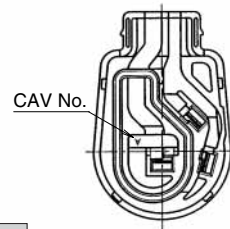
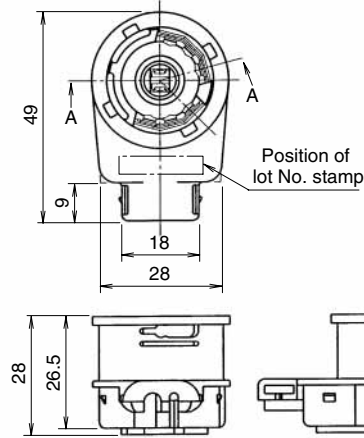


* For low-voltage check cables

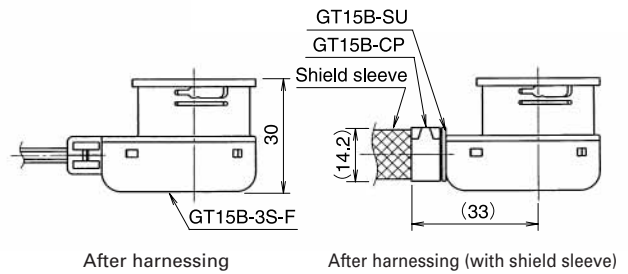


Part Number	CL No.	Conductor Size (AWG)	Outer Diameter	Packaging	RoHS
GT15A-2024SCF(B)(70)	765-0025-4-70	#20 to 24	2.4 to 2.7 mm	3,000pcs, per reel	YES

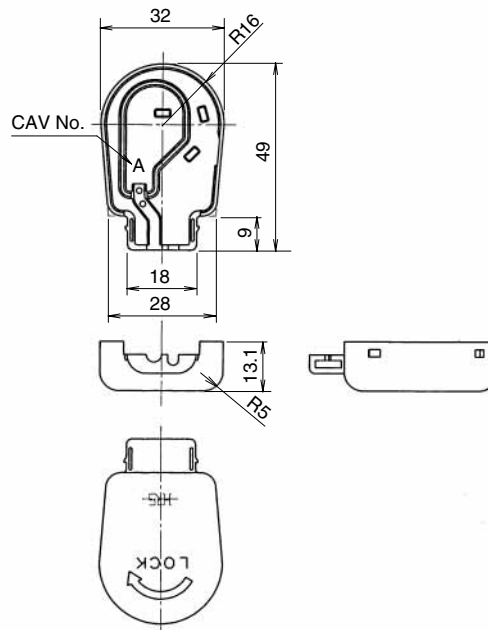
● Body



Part Number	CL No.	RoHS
GT15B-3S	765-0020-0	YES



● Cover



Part Number	CL No.	RoHS
GT15B-3S-F	765-0021-3	YES

GT 5
GT 13
GT 16
PO5G
GT 11
GT 14
GT 17
GT 19
Interface Portions and In-line Portions of the Various Units and Devices
GT 3
GT 6W
GT 7
GT 10
GT 18W
GT 15
GT 8
GT 9
GT 25

GT15 Series

GT 5

GT 13

GT 16

PO5G

GT 11

GT 14

GT 17

GT 19

GT 3

GT 6W

GT 7

GT 10

GT 18W

GT 15

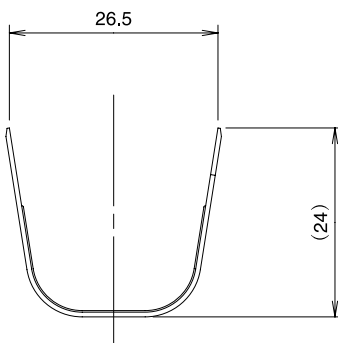
GT 8

GT 9

GT 25

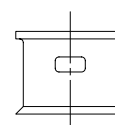
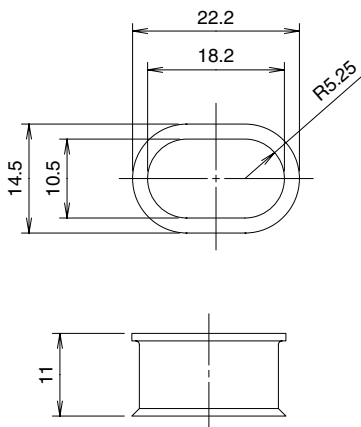
Interface Portions and In-line Portions of the Various Units and Devices

● Shield Clamp



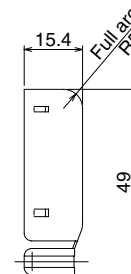
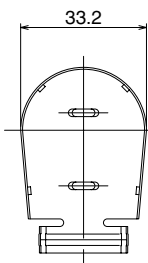
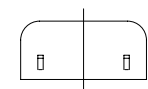
Part Number	CL No.	RoHS
GT15B-CP	765-0023-9	YES

● Shield Sleeve



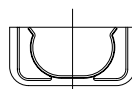
Part Number	CL No.	RoHS
GT15B-SU	765-0024-1	YES

● Shield Cover



Part Number	CL No.	RoHS
GT15B-SC-K	765-0037-3	YES

Please use the shield cover in conjunction with GT15B-2S.



◆ Termination Tools

User's manuals are available. Please contact your Hirose Electric account representative.

● Automatic Crimping Machine



Part number CM-105

Applicator : AP105-GT15T-2024S(For GT15T-2024SCF(A))
 AP105-GT15A-2024S(B)(For GT15A-2024SCF(B))
 AP105-GT15B-2024S(For GT15B-2024SCF)

● Handtool

HT105/GT15T-20S(For GT15T-2024SCF(A))
 HT102/GT15A-2024S(B)(For GT15A-2024SCF(B))
 HT103/GT15B-2024S(For GT15B-2024SCF)

Specifications

Item	Specification	Remarks
Specification	1.5ton	
Stroke length	30mm	
Number of strokes	200spm (50Hz)	240spm (60Hz)
Wight	75kg	
Motor	0.2kW	AC100V
Crimping speed	2,000 to 4,000 pcs. per Hour	

GT 5

GT 13

GT 16

PO5G

GT 11

GT 14

GT 17

GT 19

GT 3

GT 6W

GT 7

GT 10

GT 18W

GT 15

GT 8

GT 9

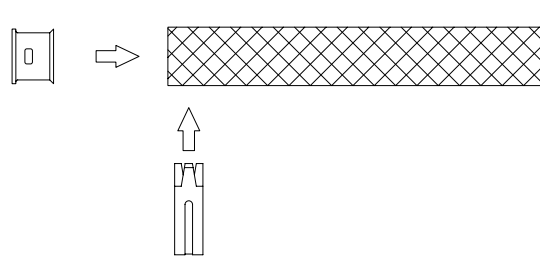
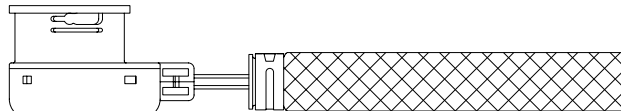
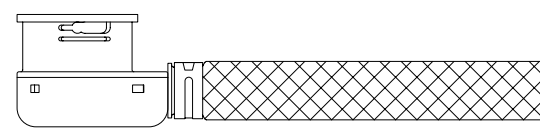
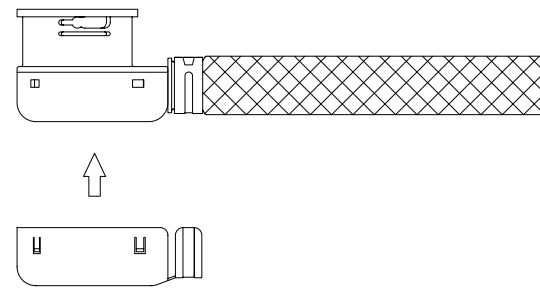
GT 25

Interface Portions and In-line Portions of the Various Units and Devices

GT15 Series

- GT 5
- GT 13
- GT 16
- PO5G
- GT 11
- GT 14
- GT 17
- GT 19
- Interface Portions and In-line Portions of the Various Units and Devices
- GT 3
- GT 6W
- GT 7
- GT 10
- GT 18W
- GT 15
- GT 8
- GT 9
- GT 25

◆ Method of Using GT15B-SU, GT15B-CP, and GT15B-SC-K

<p>1. Insert GT15B-SU into the shield sleeve and crimp with GT15B-CP.</p>	
<p>2. Insert the wire of harnessed GT15B-3S into the shield sleeve.</p>	
<p>3. Push in until the stopper catches.</p>	
<p>4. Push in GT15B-SC-K until the stopper catches.</p>	
<p>5. Completion</p>	